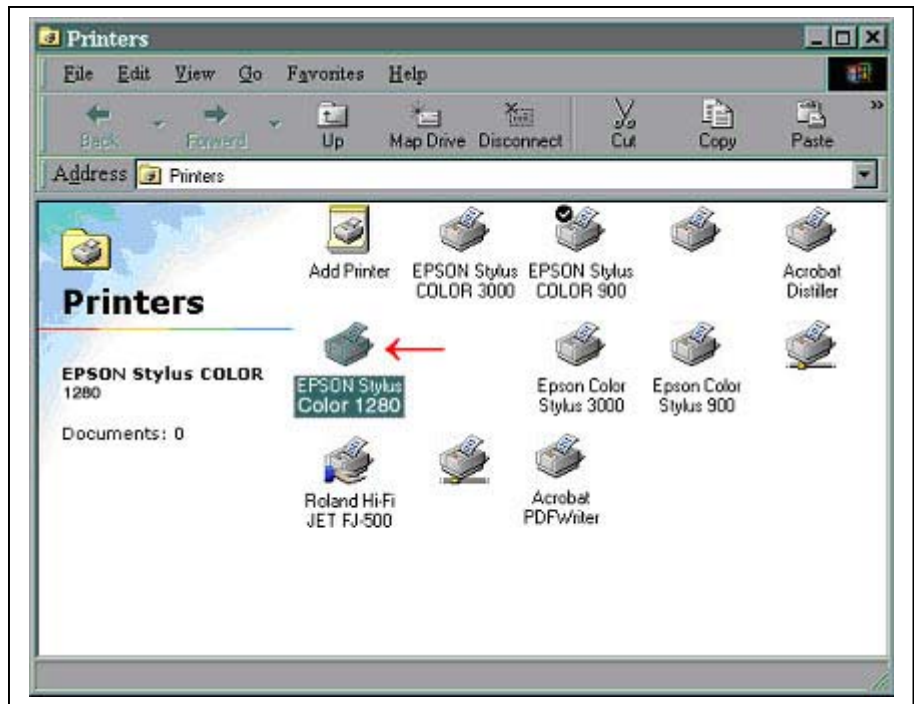


# Configuring the Epson Color Stylus 1280 Print Driver For Artainium UV+ICC Profile

1. On the Pc Desktop, click **Start – Settings – Printers**.

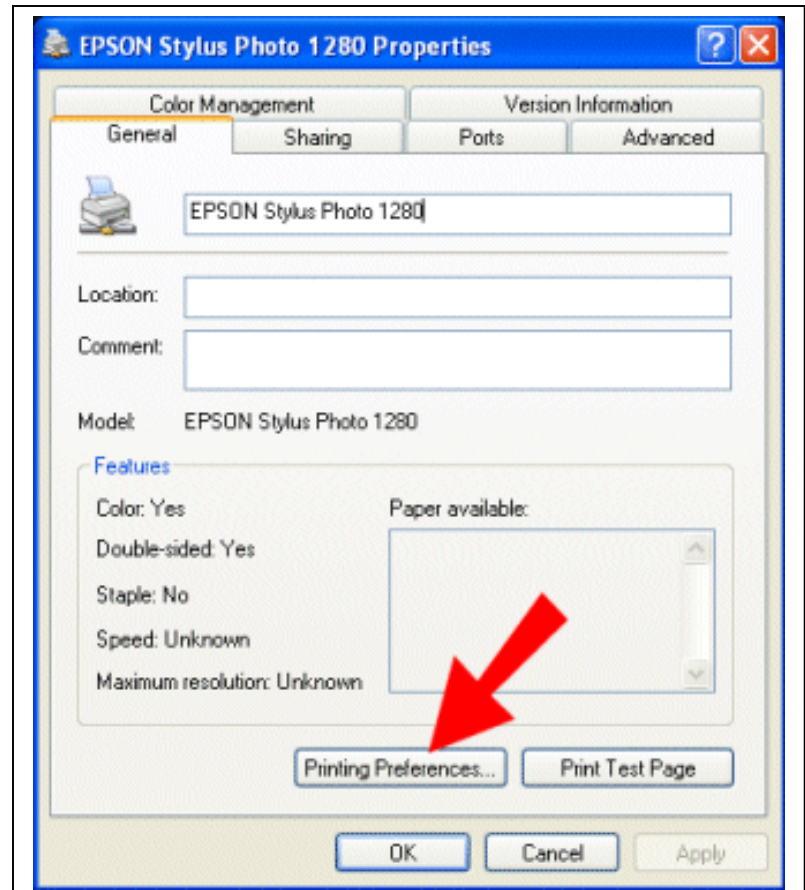
2. **Right Click** the Epson Stylus 1280 Series Printer Icon and select **Properties** from the context menu



**\*\*Windows XP users only\*\***  
The first screen you will see will be this one :-

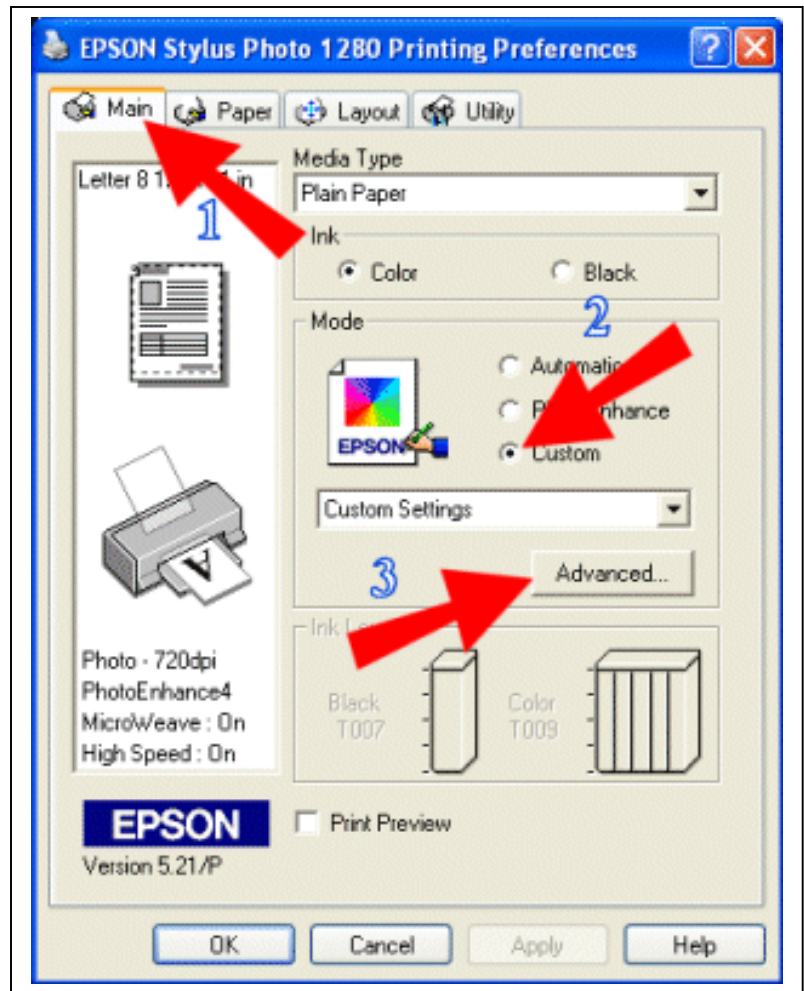
You need to click on 'Printer Preferences' first to get to the next screen.

If you do not see the 'Main' tab on the printer driver when you have clicked on 'Printing Preferences' then it is the wrong driver. There are updated drivers on the Epson website for XP and failing that people should use a Windows 2000 driver (again downloadable from the Epson site). I would advise that the 'false' driver be deleted from the printers section before installing the new driver. Once the new driver is installed the printer can be successfully set up the same way as previously on Win 95/98/ME.



When you see this screen, follow the instructions here :-

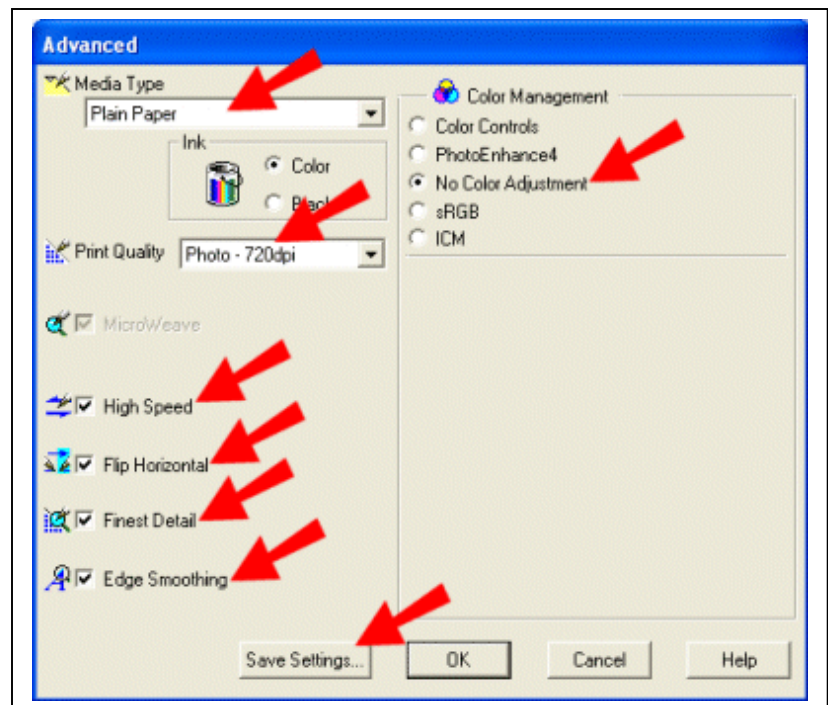
Click on the **Main (1)** tab  
Click Mode: **Custom (2)** then  
Click **Advanced (3)**



From this point we will now configure the print modes for all substrates.

Select the settings as shown.

**Media Type:** Plain Paper  
**Print Quality:** Photo – 720dpi  
**Color Management:** NO Color Adjustment  
**High Speed:** On  
**Flip Horizontal:** On  
**Finest Detail:** On  
**Edge Smoothing:** On



Now your settings are set, we're going to save them so you won't have to repeat the process every time you want to print.

Click **Save Settings**.

Type in a name in the field marked **Name:**  
Here I have typed in a suggestion. You  
only need the plain paper setting for all  
substrates.

Click **Save**; this will take you back to the  
previous screen.

Click **OK**.. Click **OK** again and close the  
printer window.

The most important setting in the print  
driver is the **No Color Adjustment**. This  
setting turns off all the color correction  
settings in the printer driver. Your graphics  
software using the Artainium ICC profile  
handles all the color correction.

