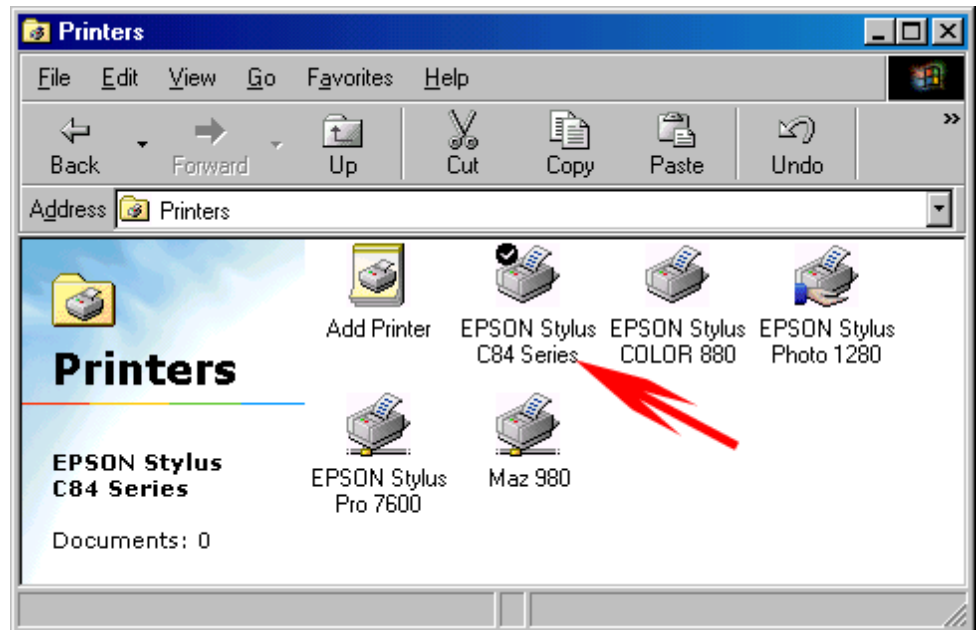


# Configuring the Epson Stylus C84 Print Driver For ArTainium ICC Profiles

1. On the Pc Desktop, click **Start – Settings – Printers**.

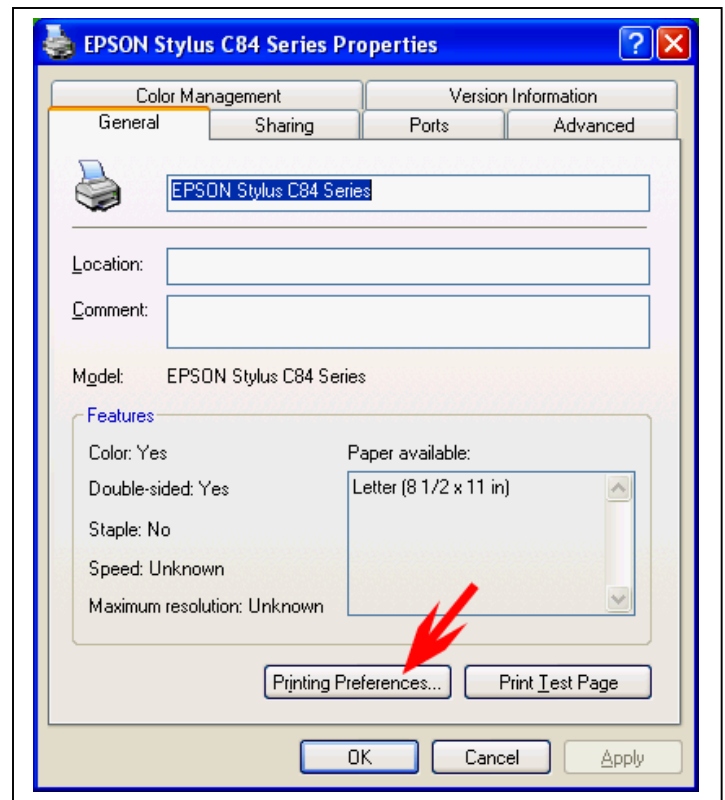
2. **Right Click** the Epson Stylus C84 Printer Icon and select **Properties** from the context menu



**\*\*Windows XP users only\*\***  
The first screen you will see will be this one :-

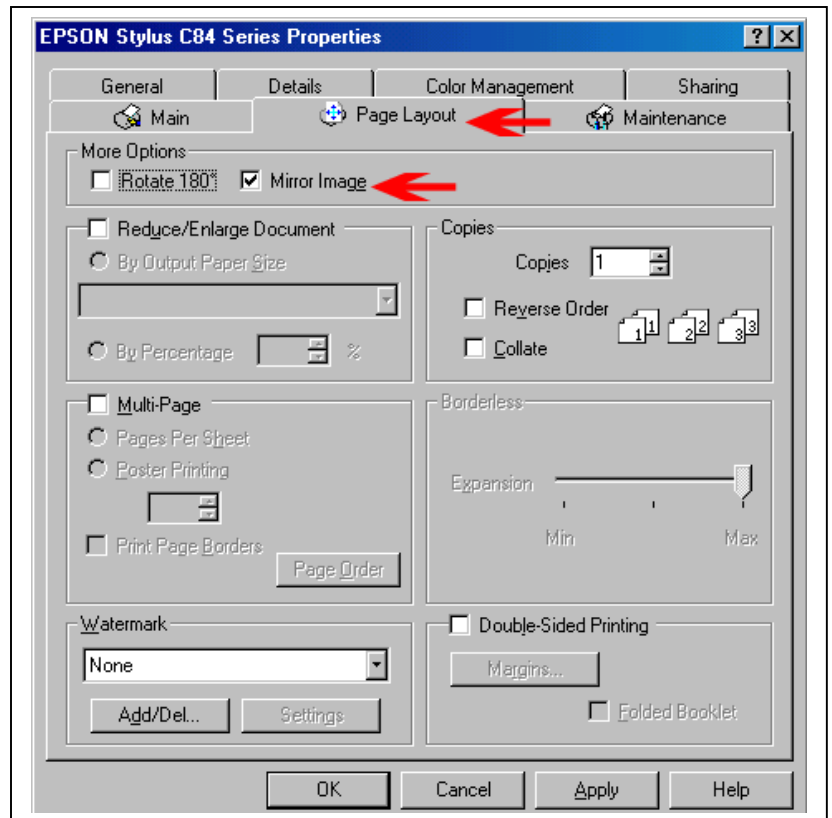
You need to click on 'Printer Preferences' first to get to the next screen.

If you do not see the 'Main' tab on the printer driver when you have clicked on 'Printing Preferences' then it is the wrong driver. There are updated drivers on the Epson website for XP and failing that people should use a Windows 2000 driver (again downloadable from the Epson site). I would advise that the 'false' driver be deleted from the printers section before installing the new driver. Once the new driver is installed the printer can be successfully set up the same way as previously on Win 95/98/ME.

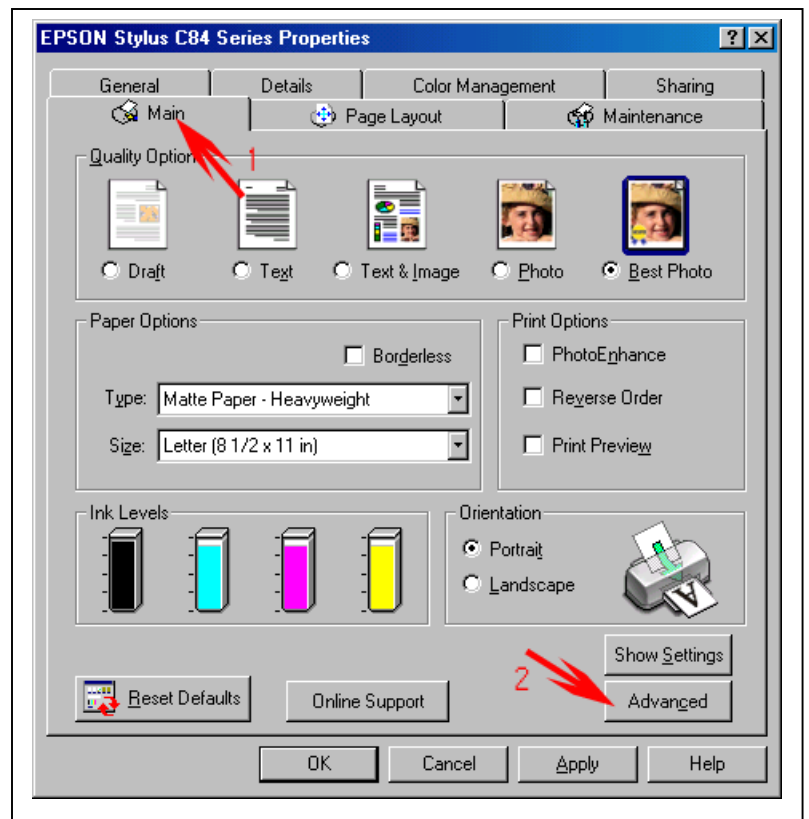


When you see this screen, follow the instructions here :-

Click on the **Page Layout** tab  
Click **Mirror Image**



Click on the **Main** (1) tab  
then Click **Advanced** 2



From this point we will now configure the print modes for all substrates.

Select the settings as shown.

**Paper & Quality Options:**

**1 Matte Paper- Heavyweight**

**2 Photo.**

**\*Best Photo Can be selected for higher resolution printing**

**Paper Options:**

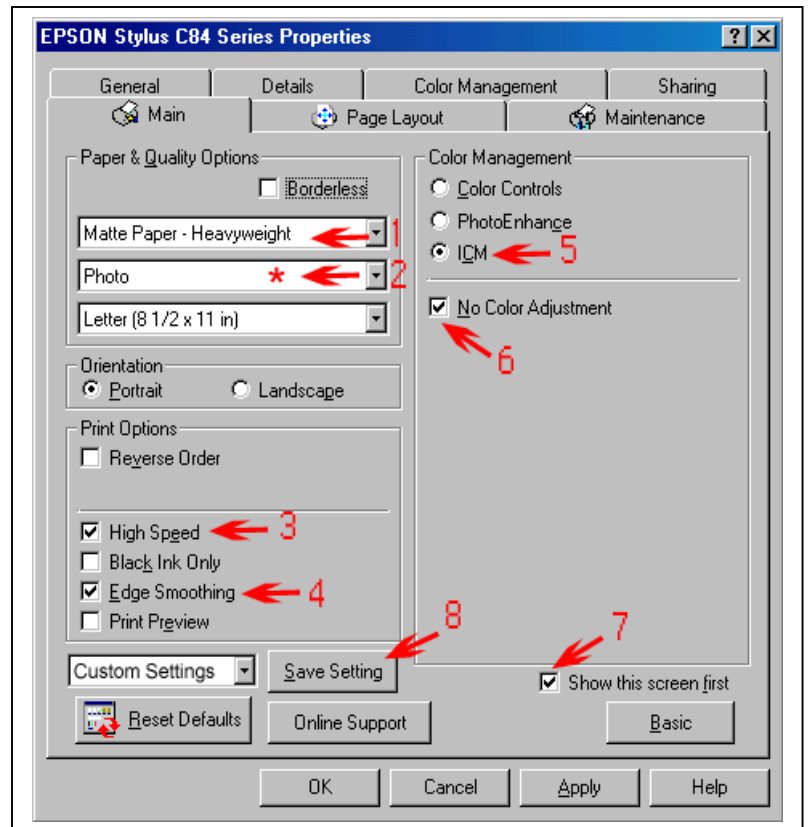
**3 High Speed On**

**4 Edge Smoothing On**

**Color Management:**

**5 ICM On**

**6 No Color Adjustment On**



Now your settings are set, we're going to save them so you won't have to repeat the process every time you want to print.

Click on **Save Setting (8)** Type in a name in the field marked **Name:**  
Here I have typed in a suggestion  
"ArTainium"  
Click **Save**; this will take you back to the previous screen.

Click **OK**.. Click **OK** again and close the printer window.

The most important setting in the print driver is the **No Color Adjustment**. This setting turns off all the color correction settings in the printer driver. Your graphics software using the Artainium ICC profile handles all the color correction.

